



CASE STUDY

DoubleTrac® Gasoline and Diesel AST

- Saves Time
- Saves Money
- Increase Installation Options

Product:
DoubleTrac® Double Wall Dock Connector and Pipe for Marina Applications

Location:
San Diego, CA

Southern California is home to the largest concentration of US military forces in the world. It is the homeport to over 60 percent of the ships of the U.S. Pacific Fleet, and over one-third of the combat power of the U.S. Marine Corps. There are over 100,000 active-duty Navy and Marine Corps personnel assigned to the ships and bases in this region.

To provide security on the harbor side the U.S. Navy employs several fast patrol boats that are powered by either gasoline or diesel engines. In the past these boats were fueled from a barge, which was not an optimum solution operationally or environmentally.

In the spring of 2013 OmegaFlex, working thru Western Pump of San Diego, completed the installation of DoubleTrac® piping from a Gasoline and Diesel Aboveground Storage Tank (AST) to a land side transition sump. A Double Wall Stainless Steel Corrugated Dock Connector supplied by OmegaFlex was used from the land side transition sump to a dock side transition sump. DoubleTrac was used from the dock side transition sump to the Gasoline and Diesel dispensers on the floating dock.

Randy Bayless, Manager of Sales Engineering for OmegaFlex stated "In marina applications DoubleTrac routes easily underneath docks and can be supplied in long lengths".

DoubleTrac is an innovative double-wall fuel piping design which includes a primary interior layer of zero-permeation, and highly corrosion resistant corrugated stainless steel with an outer secondary jacket consisting of Ethylene Fluorinated Ethylene Propylene (EFEP) bonded to a Nylon 12. The unmatched strength and zero permeation of stainless steel combined with the superior permeation resistance of EFEP as a secondary barrier layer provide a highly durable design utilizing proven materials within the industry. The interstitial space provides continuous monitoring for leak detection – making DoubleTrac the industry's most effective Zero Permeation piping solution

In addition the Double Wall Stainless Steel Corrugated Dock Connector provides continuous monitoring for leak detection while accommodating low and high tides from minus 4 feet to plus 8 feet.

(continued on back)

*Pictured above:
OmegaFlex Double Containment
Dock Connector*



US Navy specified a ten thousand gallon AST of which 7000 was for Gasoline and 3000 for Diesel. (DoubleTrac pictured above)

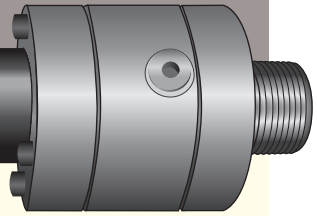


Omega Flex, Inc. • 451 Creamery Way • Exton, PA 19341
1-800-355-1039
ISO 9001 Registered Company
DBT-173 9/13

© Copyright OmegaFlex 2013

CASE STUDY

DoubleTrac[®] Gasoline and Diesel AST

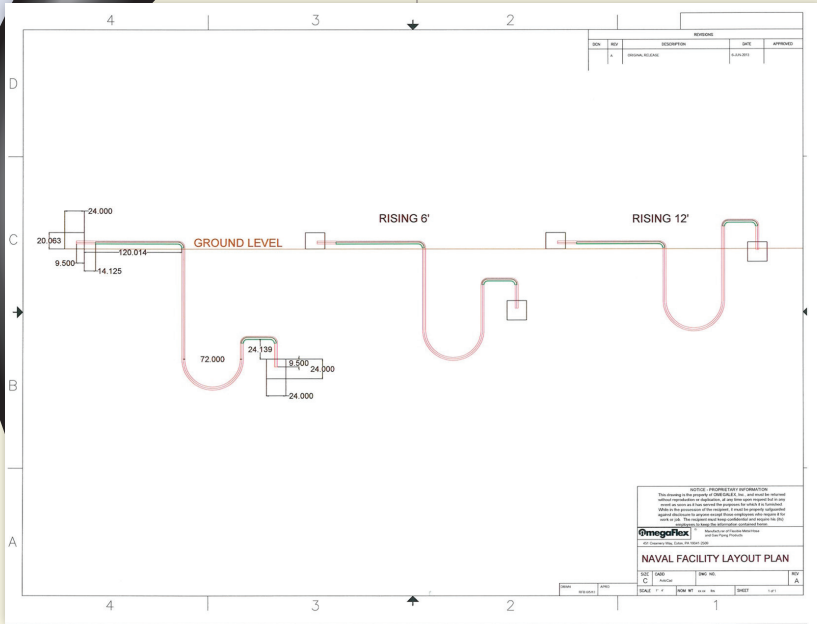


(continued from front)

According to Ryan Rethmeier, President of Western Pump who has been involved in many Marina fueling station projects, the innovative design of the dock connector is what sold them on using OmegaFlex.

The Double Containment Dock Connector is constructed with 316 stainless steel corrugated piping; coupled with 316 stainless steel plain male NPT threaded end fittings with continuous secondary monitoring ports at each end. The outer layer of the Dock Connector is covered with PVC layflat which is salt water resistance and UV stabilized.

The new DoubleTrac fittings are UL 971A listed and meet the salt spray test requirements of ASTM-B-117-90. Elbow and Tee fitting are available in 316 Stainless Steel and Brass 360. DoubleTrac also meets the stringent requirements of the Florida Department of Environmental Protection for Marina Piping Systems!



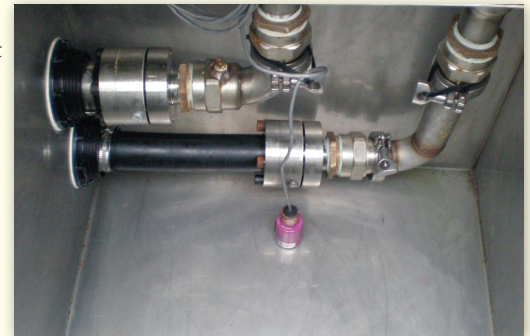
OmegaFlex supplied extensive engineering support including the design and fabrication of the dock connector cradles.

Derek Rethmeier, Project Manager Superintendent for Western Pump (and first time user of DoubleTrac) stated that “the product was easy to use and install.”



Due to the proximity of underground steam lines, OmegaFlex recommended the use of an INSUL-TEK[®] 400 HT Composite System to provide for additional heat protection up to 400F for the DoubleTrac Nylon 12 jacket. (pictured above)

Founded in 1948 Western Pump is a fully integrated petroleum equipment, maintenance, construction, and compliance testing company. They provide wholesale equipment sales, installation, compliance testing, construction, and maintenance services.



The new DoubleTrac corrosion resistant Stainless Steel fitting was used for easier assembly in the sump! This fitting provides a metal to metal seal and is field attachable.

For safety, cost-savings, and ease of installation, DoubleTrac[®] is the logical choice.